

■ New Product

MOTORTECH ITB-Throttle Bodies

For WAUKESHA® VHP GL/ GSID/ LT/ LTD Series 12 Cylinder Gas Engines

Based on its proven design, MOTORTECH offers a new ITB throttle body series for WAUKESHA® VHP GL/ GSID/ LT and LTD series 12 cylinder gas engines. Designed as a replacement, the throttle bodies perfectly fit the position of the original part below the intake manifold.

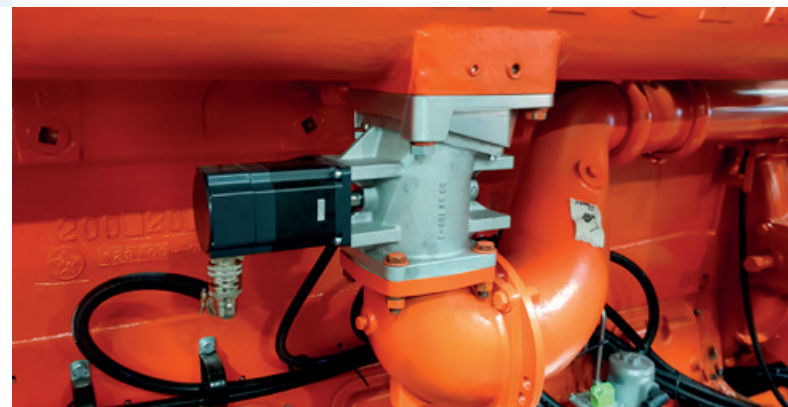
The integrated stepper motor is extremely precisely actuated by the VariStep3 stepper motor driver and eliminates the use of an external actuator. Both, ITB throttle body and VariStep3 stepper motor driver, operate with the standard WOODWARD® 2301D speed governor or with the SC100 speed controller.



Properties & Features

- Design and shape allow easy replacement of the original part
- Reinforced shaft and butterfly valve made of stainless steel for high durability even when backfiring has occurred
- Use of ball bearings instead of plain bearings
- Integrated high-resolution stepper motor
- High temperature resistant shaft seals
- Applicable for media such as natural gas and special gases
- Maintenance free product

More information about the new and already available throttle bodies for WAUKESHA® VHP Series Engines is available at www.motortech.de/infocenter/download-center.html for download.



MOTORTECH GmbH
Hogrevestr. 21-23
29223 Celle, Germany
Phone: +49 5141 - 93 99 0
Fax: +49 5141 - 93 99 99
www.motortech.de
info@motortech.de

MOTORTECH AMERICAS, LLC
1400 Dealers Avenue, Suite A
New Orleans, LA 70123
Phone: +1 504 355 4212
Fax: +1 504 355 4217
www.motortechamericas.com
info@motortechamericas.com

DISTRIBUTION

Customers / others	Yes
Representatives and Sales Partners	Yes
OEM partners	Yes
MOTORTECH subsidiaries	Yes