

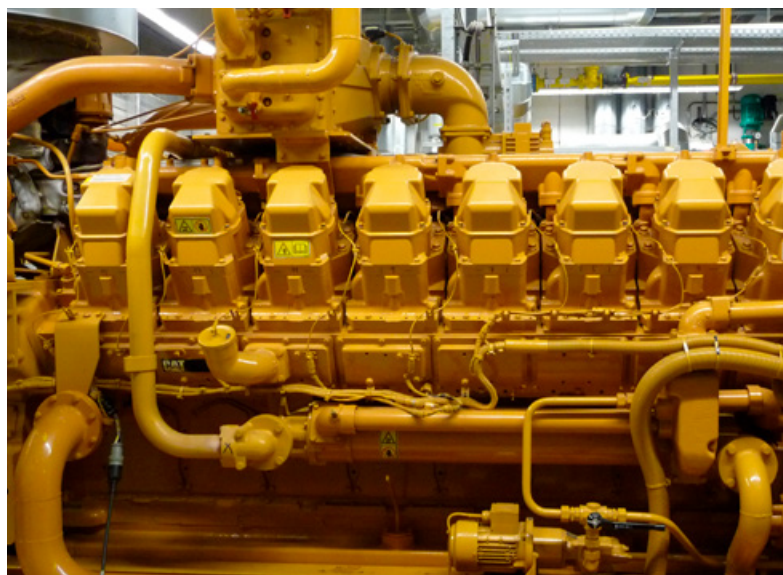
■ New Product

## Thermocouple P/N 56.01.183-16

For CATERPILLAR® G3500C/E Series Gas Engines

The MOTORTECH thermocouple P/N 56.01.183-16 can be used on G3500C/E engines and is a direct replacement for the following OEM parts:

P/N	Description	Application	Equivalent to
56.01.183-16	Sensor GP – TEMPERATURE	G3512E, G3516C, G3516E, G3520C, G3520E	383-2981, 207-2371



**DISTRIBUTION**

Customers / others	Yes
Representatives and Sales Partners	Yes
OEM partners	Yes
MOTORTECH subsidiaries	Yes